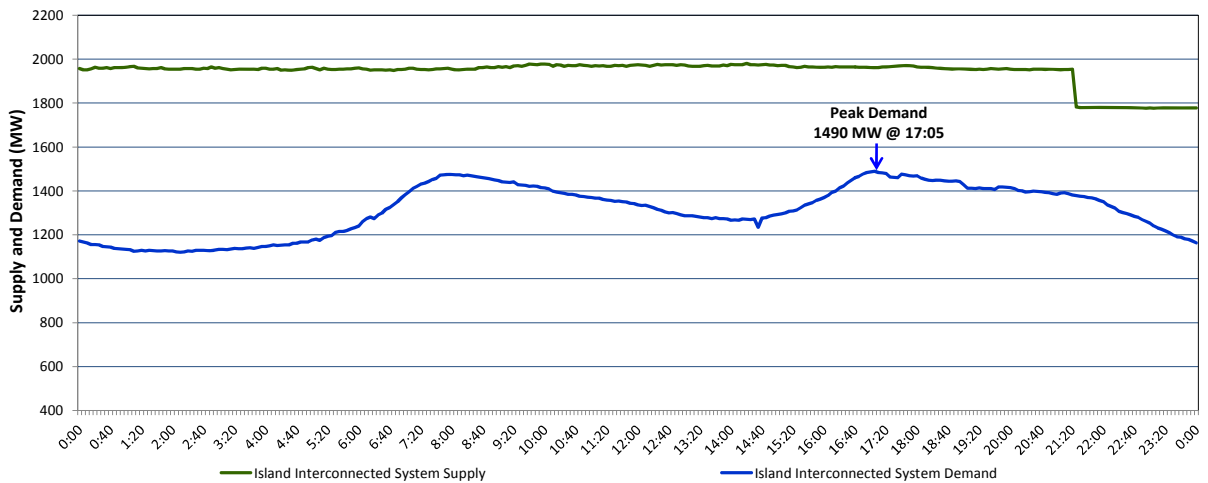


Newfoundland Labrador Hydro (NLH) Supply and Demand Status Report Filed Thursday, December 08, 2016

Section 1 Island Interconnected System Supply and Demand Actual 24 Hour System Performance For Wednesday, December 07, 2016



Supply Notes For December 07, 2016

- 1,2
- A As of 1956 hours, January 14, 2016, Nalcor Exploits Grand Falls Unit 7 unavailable. No net impact to the Island Interconnected System.
 - B As of 1526 hours, March 26, 2016, Stephenville Gas Turbine End A unavailable (25 MW).
 - C As of 1316 hours, July 15, 2016, Nalcor Exploits Grand Falls Unit 4 unavailable. Net impact to the Island Interconnected System is 7 MW.
 - D As of 1719 hours, September 09, 2016, Nalcor Exploits Bishop's Falls plant unit 9 unavailable. No net impact to the Island Interconnected System.
 - E As of 2132 hours, October 10, 2016, Nalcor Exploits Bishop's Falls plant unit 8 unavailable. Net impact to the Island Interconnected System is 1 MW.
 - F As of 1007 hours, November 04, 2016, Nalcor Exploits Bishop's Falls plant unit 2 unavailable. Net impact to the Island Interconnected System is 2 MW.
 - G As of 1525 hours, November 30, 2016, Nalcor Exploits Bishop's Falls Unit 6 unavailable. Net impact to the Island Interconnected System is 2 MW.
 - H At 0830 hours, December 07, 2016, Holyrood Unit 1 available to 148 MW. Previously available to 140 MW (170 MW).
 - I At 2123 hours, December 07, 2016, Holyrood Unit 2 unavailable (170 MW).

Section 2 Island Interconnected System Supply and Demand

Thu, Dec 08, 2016	Island System Outlook ³	Seven-Day Forecast	Temperature (°C)		Island System Daily Peak Demand (MW)	
			Morning	Evening	Forecast	Adjusted ⁷
Available Island System Supply: ⁵	1,775 MW	Thursday, December 08, 2016	-5	0	1,450	1,353
NLH Generation: ⁴	1,475 MW	Friday, December 09, 2016	2	1	1,375	1,279
NLH Power Purchases: ⁶	95 MW	Saturday, December 10, 2016	-3	-3	1,400	1,304
Other Island Generation:	205 MW	Sunday, December 11, 2016	-5	-7	1,515	1,417
Current St. John's Temperature:	-6 °C	Monday, December 12, 2016	-6	-7	1,555	1,457
Current St. John's Windchill:	-11 °C	Tuesday, December 13, 2016	-5	-4	1,520	1,422
7-Day Island Peak Demand Forecast:	1,555 MW	Wednesday, December 14, 2016	-8	-3	1,515	1,417

Supply Notes For December 08, 2016

- Notes:
1. Generation outages for running and corrective maintenance are included. These are not unusual for power system operations. They generally do not impact customer supply. The power system operators schedule outages to system equipment whenever possible to coincide with periods when customer demands are low and sufficient supply reserves are available. However, from time to time equipment outages are necessary and reserves may be impacted.
 2. Due to the Island Interconnected System being isolated from the larger North American grid, when there is a sudden loss of large generating units some customer's load must be interrupted for short periods to bring generation output equal to customer demand. This automatic action of power system protection, referred to as under frequency load shedding, is necessary to ensure the integrity and reliability of system equipment. Under frequency events typically occur 5 to 8 times per year on the Island Interconnected System and the resultant customer load interruptions are generally less than 30 minutes.
 3. As of 0800 Hours.
 4. Gross output including station service at Holyrood (24.5 MW) and improved NLH hydraulic output due to water levels (35 MW).
 5. Gross output from all Island sources (including Note 4).
 6. NLH Power Purchases include: CBPP Co-Gen, Nalcor Exploits, Rattle Brook, Star Lake, Vale capacity assistance (when applicable), and Wind Generation.
 7. Adjusted for CBP&P interruptible load and the impact of voltage reduction, when applicable.

Section 3 Island Peak Demand Information Previous Day Actual Peak and Current Day Forecast Peak

Wed, Dec 07, 2016	Actual Island Peak Demand ⁸	17:05	1,490 MW
Thu, Dec 08, 2016	Forecast Island Peak Demand		1,450 MW

- Notes: 8. Island Demand is supplied by NLH generation and purchases, plus generation owned and operated by Newfoundland Power and Corner Brook Pulp & Paper (Deer Lake Power, DLP).